

IRMA Nov 09 Analysis

Overview:

IRMA 2009 had 4 distinct sections i.e. English Comprehension, Quantitative Aptitude, Analytical Reasoning and Issues of Social Concern.

The paper pattern was as follows-

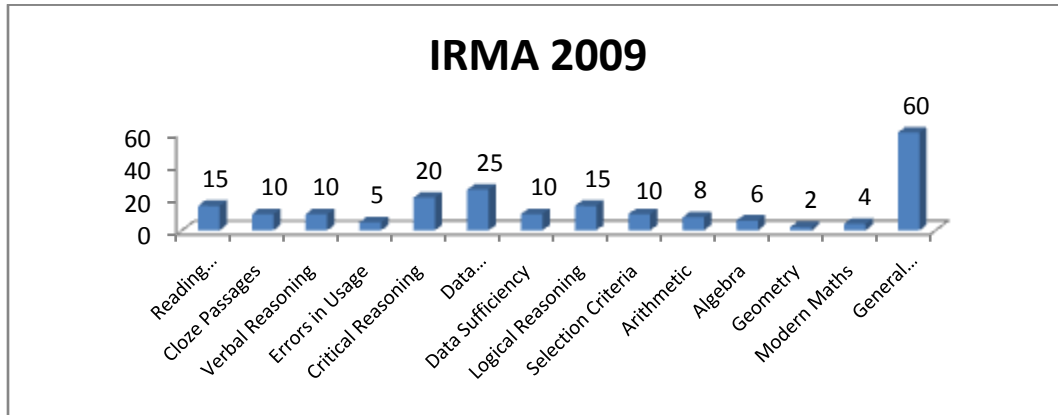
Section	Category	Number of questions	Attempts	Expected Cut-offs	Level of Difficulty
I	English Comprehension	40	26 - 28	18 - 20	Easy to Moderate
II	Quantitative Aptitude	50	28 - 32	22 - 24	Easy
III	Analytical Reasoning	50	24 - 26	17 - 20	Moderate
IV	Issues of Social Concern	60	25 - 30	15 - 18	Moderate to Difficult

The overall cut-off is expected to be 80+.

The overall difficulty level of the paper was Moderate.

Number of questions	200
Number of Sections	4
Number of Options	5
Time	120 minutes
Negative marking	25%

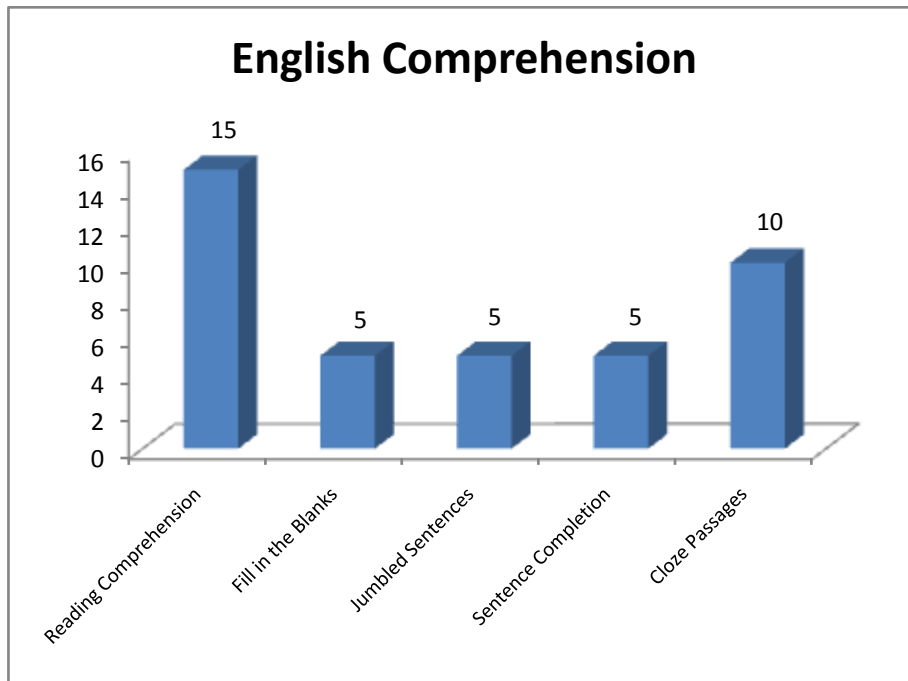
The topic-wise breakup of the entire paper is:



English Comprehension – 40 Questions

This section comprised –

1. RC
2. Choosing grammatically correct sentences
3. Jumbled Sentences
4. Dual Fill in the Blanks
5. Cloze passage



1. The RC passage had fifteen questions of which nine questions were factual; one question was a main idea/theme question followed by three synonym and two antonym questions based on words highlighted in the passage. The passage was around 700 words in length and was quite simple. Being an IRMA passage, its theme was organic farming before and after the green revolution.

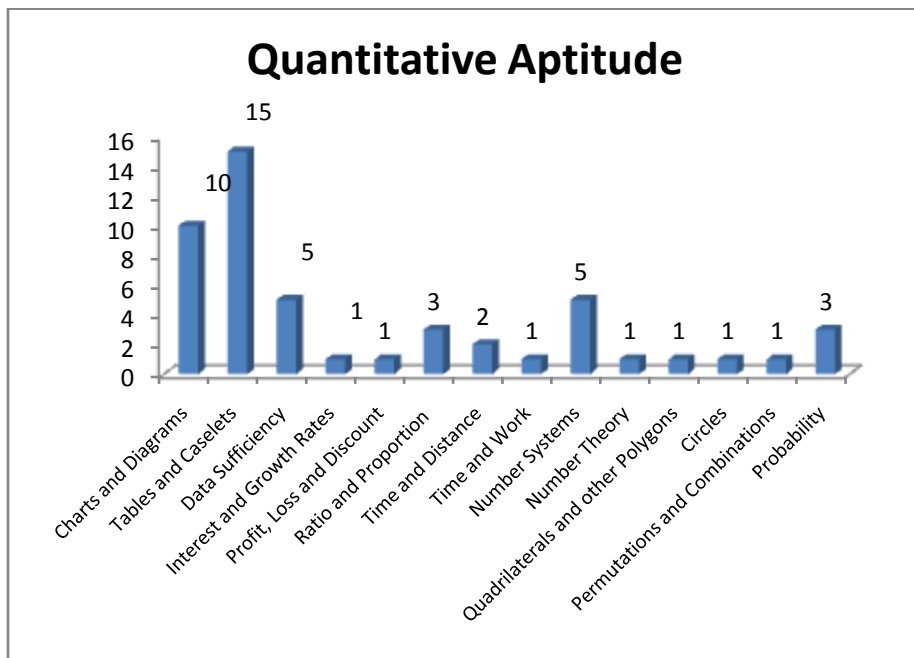
The questions that followed were –

- 3 questions wherein a statement that was not true according to the passage had to be identified.
 - 1 question asking for the true statement to be identified.
 - 5 inference based questions which included 3 statements each.
 - Synonyms included 'practiced', 'impact' and 'fuel'
 - Antonyms included 'thrived' and 'drastically'.
2. Grammatically correct sentences had to be selected to complete the sentences. There were five questions of this type. The sentence fragments to be chosen were required to be grammatically correct rather than just being logically consistent. As a result, the level of difficulty of these questions was moderate.
 3. There were five jumbled sentences which were very simple. In each question, some answer options were directly eliminated by identifying the opening line of the paragraph.
 4. There were five dual fill in the blank questions. The blanks could be easily filled by understanding the flow of the sentence. The difficulty level of these questions was easy.
 5. There was a cloze passage consisting of 10 blanks. The difficulty level was very easy.

In general, a good time allocation for this section would have been 25 minutes.

Quantitative Aptitude - 50 Questions

The QA section had 50 questions of which 25 were Data Interpretation and 5 were Data sufficiency.



- The instructions for the Data Sufficiency questions were different from what the norm is. Option 5 said that both the questions are required whereas option 4 said that data was insufficient.
- However, the data sufficiency questions were extremely simple and all could have been attempted within 5 minutes. All the questions were based on arithmetic or geometry.
- The data sufficiency questions asked in the exam were similar to :

Each question is followed by two statements I and II.

Mark 1, if Statement I alone is sufficient to answer the question but Statement II is not.

Mark 2, if statement II alone is sufficient to answer the question but statement I is not.

Mark 3, if statement I alone and statement II alone is sufficient to answer the question.

Mark 4, if both statements are not sufficient to answer the question.

Mark 5, if both statements together are sufficient to answer the question.

1. What is the rate of simple interest?
 - I. Interest on Rs. 15000 is Rs. 5400 in three years.
 - II. The amount gets doubled in five years.

 2. What is the perimeter of a rectangular field?
 - I. The area of the rectangle is 135 sq. m
 - II. The ratio of length to breadth of the rectangle is 3 : 5

 3. Find the sum of the digits of a two-digit number.
 - I. The difference between the two digits of the number is 9.
 - II. The product of the digits of the number is 0.

 4. The sum of the incomes of A, B, C, D and E is Rs. 52,000.
 - I. The average of the income of A and B is Rs. 15000.
 - II. C's income is 1.3 times B's income.

 5. Sameer sold his furniture for Rs.42,000. How much percent profit did he make?
 - I. He had bought the furniture at a discount of 15% four years back.
 - II. He sold the furniture at twice his cost price.
- The remaining questions in this section were all based on fundamental formulae and properties and involved simple calculations.

Some of the questions asked in the actual exam were similar to:

Find the approximate values of the following:

6. $(9.008)^3$

7. Multiplication $28.998 \times 13.500 \times 18.001$

8. Addition $171.888 + 25.011 =$

9. Division $75.999 \div 19.002$

10. Percentage $15.499 \times 32.999 + x\% \text{ of } 47.997 = 535.499$

11. Shivram sold gardening tools for Rs. 25800 at 20% profit. For how much did he buy them?

12. Rakesh invested Rs.12000 at 6.5 p.c.p.a. simple interest. Find the total amount that he received at the end of three years.
13. In how many ways can the letters of the word "PRESS" be arranged?

A bag contains three red, five green and two red balls.
14. What is the probability that two balls drawn at random are red in colour?
15. If one ball is drawn at random, what is the probability that it is blue or green in colour?
16. If three balls are drawn at random, what is the probability that all three are red or green in colour?
17. If two-fifth of a number is three-fourth of another, what is the respective ratio of the first number to the second?
18. The ratio of the current ages of Gopi and Milan is 3 : 2. Five years hence, their ages will be in the ratio 10 : 7. What is Gopi's current age?
19. Three people take 15, 20 and 30 seconds to run around a circular track. If they start running together, in how much time will they meet at the starting point for the first time?
20. A 240 m long train crosses a platform in half a minute. What is the speed of the train?
21. What is the area of a circle with circumference 88 m?
22. A square field has area 529 sq m. The cost of fencing is Rs.15 per sq. m. How much would it cost to fence the square field?
23. What is the smallest number which when added to 840 makes it a perfect square?
24. 8 men can complete a piece of work in 24 days, 8 women can do it in 48 days and 10 children can do the same in 48 days. How many days will 4 men, 16 women and 10 children take to finish the piece of work?
25. Sriram started a business by investing Rs. 48,500. Jairam joined him 4 months later with an investment of Rs. 56,000. If the total profit at the end of two years was Rs. 79,940, find Sriram's share in the profit.

- The Data Interpretation section had 5 DI sets with 5 questions each. The DI sets were very simple and did not involve too many calculations.

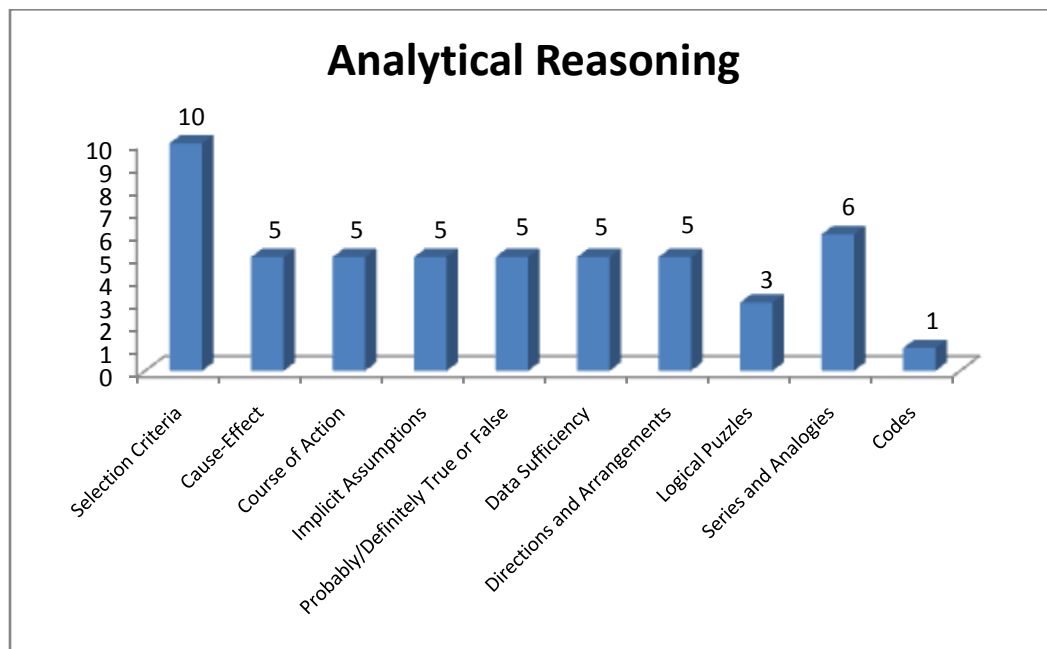
A brief summary of the DI sets is as shown below:

DI Set	No of Questions	Description	Question Types	Difficulty Level
Number of children attending a school.	5	2 Pie Charts	1) Ratio and proportion 2) Number of students 3) Percentages	Easy
Amount invested by farmers in some period	5	Line Graph	1) Total Investment 2) Average Investment 3) Ratio and proportion 4) Percentage	Easy
Price of foodstuff.	5	Table	1) Profit and percentage profit 2) Ratio and Proportion	Easy
Number of villagers visiting a village fair.	5	Table	1) Total visitors 2) Average visitors 3) Ratio and Proportion 4) Percentages	Easy
Males, females and children in a village and their interests.	5	Caselet	1) Number of people following/not following particular interest 2) Percentage of people following an interest to the total	Easy

In general, the entire section was Easy. A good time allocation for this section would have been 35 minutes.

Analytical Reasoning – 50 Questions

This section comprised 20 questions on Critical Reasoning and 30 questions on Logical Reasoning.



- The 20 Critical reasoning questions consisted of 4 sets of 5 questions each covering the following areas.

- 1) Implicit Assumptions
- 2) Cause-Effect
- 3) Course of Action
- 4) Inference-Probably/Definitely True

1) Implicit Assumptions: These were of a moderate difficulty level.

2) Cause – Effect: The format of these questions was that a cause (or effect) was given and the corresponding effect (or cause) was to be found from 5 possible options. The thing to be careful about in these questions was to read the question stem carefully. In 3 questions, the effect was to be found, while in the other two, the cause was to be found. These questions were simpler compared to the other questions in Critical Reasoning.

- 3) Course of Action: These questions were deceptive and of a moderate difficulty level.
- 4) Probably/Definitely True: A passage was given on “conventional and non-conventional sources of energy” and 5 questions on determining whether the inference is probably (or definitely) true or false were given. These were of a moderate difficulty level.

In general, this part of the section was moderately difficult and should have been completed within 20 minutes.

- The remaining 30 questions were based on Logical Reasoning and covered various concepts such as Selection criteria, Series and Analogies, Codes, Family tree and relationships, Linear Arrangements and Directions.
- The 10 questions on Selection criteria were based on the selection of a “Rural Marketing Officer”. Most questions were extremely simple and involved direct application of the rules given. Possibly, the only tricky question was one where the data in the question mentioned “graduate” instead of the required “graduate in agricultural science”.
- There were 4 odd man out and 2 analogy questions. All except one were based on agricultural terminology and knowledge rather than logical skills.
- There were 5 data sufficiency question based on logical reasoning. Again, the order of the instructions was changed in this section. 2 questions were based on blood relationships and one each on directions, ranks and on numerical logic.
- The other questions in reasoning were extremely simple.

The questions asked in the actual paper were similar to the questions given below:

1. A number 8123567 is given. When these digits are placed in descending order, how many digits are such that they stay at the same position?
2. How many words can be formed by using the letters A, R E and F exactly once? A four letter word was to be formed.
3. For the word ORCHESTRA, how many pairs of letters are there such that they have the same number of digits between them in the word as in the alphabet?
4. Among the numbers 15, 35, 85, 95 and 75, find the odd man out.
5. If RAMBO is coded as %#3*2 and HENO is coded as 9&@2, how is AMHE coded?

6. Find the odd man out in Papaya, Gourd, Banana, Brinjal and Mushroom.
7. Find the odd man out in Wheat, Sesame, Millet, Corn, Bajra
8. If Mustard is to Seed, then Ginger is to what?
9. If Kharif is to Rains then Rabi is to what?
10. 8 people are seated around a circular table facing the centre. Clues were given as to the positions. From the clues, the positions of all 8 people could have been easily found.

In general, this part of the section was quite simple and could have been attempted within 15 minutes.

Issues of Social Concern – 60 Questions

The emphasis of this section was on government policies and schemes related to agriculture and rural areas, international knowledge on trade and agriculture and a few questions related to economy.

Some questions asked in this section were actually a repeat from last two years' papers:

From IRMA 2008

- Which of the following is NOT a Green House Gas?
- Odd one out - Wheat, Corn, Sesame, Paddy, Millet
- India's first genetically modified crop was
- Probability question was also very similar

From IRMA 2007

- Highest Milk producing state in India
- Selection criteria set was also very similar

Some of the questions asked in this section were very similar to the ones given below:

1. The Doha deadlock is associated with which of the following organizations?
2. The country which was recently included in WTO in the Doha summit 2009.

3. The headquarters of the WTO is located in:
4. Due to low rainfall, which of the following crops of June-September are likely to be affected?
 - A. Rice
 - B. Sugarcane
 - C. Bajra
5. The Government of India decided to convert the 'Crop loan' given to farmers into 'Long tenure loan'. Which of the following could be the reason for this decision?
 - A. Agriculture did not show good profits in the recent years.
 - B. The Government wanted to provide loans at 2% or 3% p.a while the banks were not ready for it.
6. Which of the following is not a jute producing state?
7. Ramon Magsaysay 2009 award is given to an Indian along with others. Who is the recipient of this award?
8. Who is an economist of international repute and winner of Nobel Prize?
9. 'Carbon credit' is associated with which of the following?
10. Agricultural and Processed Food Products Export Development Authority (APEDA) was established in the year:
11. Which organization launched the World Ahead Program in Meghalaya recently?
12. Bill Gates was a recipient of which of the following awards in 2009?
13. The Government of India, State Govts. provide subsidies on which of the following?
14. Who is the chairman of the National Farmer's Commission?
15. Which of the following terms are not associated with agriculture?
16. Which of the following organizations are not associated with agriculture?

17. As a rough estimate, what percent of the Indian population is engaged in agriculture and allied activities?
18. Which of the following countries is the largest producer of milk?
19. The State Co-operative milk production movement was the most successful in which of the following states?
20. Co-operative farming for which of the following crops has been the most successful in Maharashtra?
21. In West Bengal, most of the population would be engaged in which of the following occupations?
22. How many Gram Panchayats are there in India?
23. Which of the following is the single largest private employment generation sector?
24. Which of the following is not a green house gas?
25. What is the full form of SHG?
26. Which of the following is related to the health sector in rural areas?
27. Which organization is concerned with the universalization of education?
28. Which of the following is a genetically modified crop?
29. The rural areas are comparatively free from which of the following problems?
30. According to annual budget 2009-10, what is the government's aim for agricultural growth?
31. Human Development Index is not measured by which of the following parameters?
32. What is the amount of the 'Relief Package' introduced by the Government for farmers?
33. Which of the following is an economic and easy method of water conservation?

34. The Government does not announce the support price of which of the following items?
35. Which of the following are the non-conventional sources of energy?
36. Which of the following are allowed to deal in commodities?
37. 'Development as Freedom' is a book written by:
38. Which amendment of the Constitution enacted Panchayati Raj?
39. Which of the following organizations was formed to promote rainfed farming?
40. Which scheme addressed critical gaps in agricultural development?
41. Which of the following statements were the achievements of the Public Distribution System (PDS)?
42. In order to improve the previous PDS, a new PDS was formed, what was its name?
43. Which of the following was the purpose of Destructive insects and Pests Act?
44. Which state gave 25 kg rice at Rs. 3 per kg to each beneficiary in 2006?
45. Under which scheme was wheat provided at Rs. 2 per kg?
46. The labourers of which organization are likely to be engaged in laying down 12 lakh km of fiber optic in India?
47. Which of the following organization is relocated to health ministry?
48. Which of the following is the source of funds to the Panchayat Raj institutions?
49. The expenditure on health as a percent of GDP is 0.9%, as per National Rural Health Mission the target is to increase it to:

50. The Government has planned to do model social audit of the national program and schemes launched for the public welfare, it was done for the first time for which state?
51. What part of the Indian one rupee is provided as a subsidy by the government to the public?
52. Which of the following organization manages the Watershed Development Fund?
53. Which of the following organizations were established to address the queries of the farmers directly?
54. Which of the following is not a scheme launched by the ministry of rural affairs?
55. What are the reasons for poor health system in rural India?
56. What is the target of increasing the irrigation area as per the Bharat Nirman Scheme?

In general, the last 25 minutes of the paper should have been used to attempt this section based on the social awareness of the individual students.

Overall, the IRMA 2009 paper was fairly simple and a student with an above average grasp of basic concepts could have attempted around 100-110 questions in the allotted time frame.